

RF Toolbox™ Release Notes



MATLAB®



## How to Contact MathWorks



Latest news: [www.mathworks.com](http://www.mathworks.com)  
Sales and services: [www.mathworks.com/sales\\_and\\_services](http://www.mathworks.com/sales_and_services)  
User community: [www.mathworks.com/matlabcentral](http://www.mathworks.com/matlabcentral)  
Technical support: [www.mathworks.com/support/contact\\_us](http://www.mathworks.com/support/contact_us)



Phone: 508-647-7000



The MathWorks, Inc.  
1 Apple Hill Drive  
Natick, MA 01760-2098

*RF Toolbox™ Release Notes*

© COPYRIGHT 2004–2022 by The MathWorks, Inc.

The software described in this document is furnished under a license agreement. The software may be used or copied only under the terms of the license agreement. No part of this manual may be photocopied or reproduced in any form without prior written consent from The MathWorks, Inc.

FEDERAL ACQUISITION: This provision applies to all acquisitions of the Program and Documentation by, for, or through the federal government of the United States. By accepting delivery of the Program or Documentation, the government hereby agrees that this software or documentation qualifies as commercial computer software or commercial computer software documentation as such terms are used or defined in FAR 12.212, DFARS Part 227.72, and DFARS 252.227-7014. Accordingly, the terms and conditions of this Agreement and only those rights specified in this Agreement, shall pertain to and govern the use, modification, reproduction, release, performance, display, and disclosure of the Program and Documentation by the federal government (or other entity acquiring for or through the federal government) and shall supersede any conflicting contractual terms or conditions. If this License fails to meet the government's needs or is inconsistent in any respect with federal procurement law, the government agrees to return the Program and Documentation, unused, to The MathWorks, Inc.

### Trademarks

MATLAB and Simulink are registered trademarks of The MathWorks, Inc. See [www.mathworks.com/trademarks](http://www.mathworks.com/trademarks) for a list of additional trademarks. Other product or brand names may be trademarks or registered trademarks of their respective holders.

### Patents

MathWorks products are protected by one or more U.S. patents. Please see [www.mathworks.com/patents](http://www.mathworks.com/patents) for more information.

## R2022b

|  |     |
|--|-----|
| <b>RF Budget Object: Specify number of harmonics used for all tones in HB analysis</b> .....         | 1-2 |
| <b>RF Budget Analyzer App: Model stripline and use network objects in S-parameters element</b> ..... | 1-2 |
| <b>Time Response Function: Compute time response of rational objects with initial states</b> .....   | 1-2 |
| <b>Overview topics: RF filter, matching network, and high-speed backplane design</b> .....           | 1-2 |

## R2022a

|  |     |
|--|-----|
| <b>RF System object: Model MISO and SIMO, and add Simulink Inports and Outputs</b> .....                               | 2-2 |
| <b>Amplifier Element: Model RF amplifier using network parameters and two-port Touchstone file</b> .....               | 2-2 |
| <b>RF Antenna Element: Model antenna in Transmit-Receive configuration in RF Budget Analyzer app</b> .....             | 2-2 |
| <b>Noise Parameters Function: Extract or build noise data from two-port Touchstone file or noise figure data</b> ..... | 2-2 |
| <b>IMT Mixer Element: Model mixer with intermodulation table</b> .....   | 2-2 |
| <b>Stripline Element: Model stripline transmission line element</b> .....  | 2-2 |
| <b>Delete Function: Delete circuit object</b> .....  | 2-2 |
| <b>RF Plot: Plot S-parameter data with multiple indices and mixer spurs</b> ..   | 2-3 |
| <b>S-parameters: Calculate S-parameter of stripline and IMT mixer elements</b> .....                                   | 2-3 |
| <b>Functionality being removed or changed</b> .....  | 2-3 |
| rftool function will be removed .....  | 2-3 |

|   |     |
|---|-----|
| smithchart function will be removed . . . . .                         | 2-3 |
| writeva function will support only one-port rational object . . . . . | 2-3 |

## R2021b

|   |            |
|---|------------|
| <b>Richards'-Kuroda Workflow: Apply Richards' and Kuroda's transformations to circuit objects . . . . .</b>                     | <b>3-2</b> |
| <b>Phase Shift Element: Design phase shift element using circuit objects or RF Budget Analyzer app . . . . .</b>                | <b>3-2</b> |
| <b>RF Antenna Element: Design receiver antenna using circuit objects or RF Budget Analyzer app . . . . .</b>                    | <b>3-2</b> |
| <b>Microstrip Transmission Line: Design standard, inverted, embedded, and suspended microstrip transmission lines . . . . .</b> | <b>3-2</b> |
| <b>LC Ladder Element: Design LC ladder in RF budget chain or RF Budget Analyzer app . . . . .</b>                               | <b>3-2</b> |
| <b>RF Plot: Support for LC ladder element . . . . .</b>   | <b>3-3</b> |
| <b>Group Delay, Noise Figure, and S-parameters: Support for electrical length transmission line . . . . .</b>                   | <b>3-3</b> |
| <b>Functionality being removed or changed . . . . .</b>   | <b>3-3</b> |
| Coplanar waveguide transmission line object changed . . . . .   | 3-3        |

## R2021a

|  |            |
|--|------------|
| <b>Matching Network Designer App: Design, visualize, and compare matching networks for one-port load . . . . .</b>                                     | <b>4-2</b> |
| <b>RF System Object: Create System object for circuit envelope simulation in MATLAB . . . . .</b>  | <b>4-2</b> |
| <b>Piecewise Linear Response: Calculate time responses of rational or rfmodel.rational objects to piecewise linear input signal . . . . .</b>          | <b>4-2</b> |
| <b>Relative Error Metrics and Noise Floor: Improve quality of rational fitting with relative error metrics and noise floor specification . . . . .</b> | <b>4-2</b> |
| <b>Series and Shunt RLC Elements: Design series and shunt RLC networks using circuit objects or RF Budget Analyzer app . . . . .</b>                   | <b>4-3</b> |

|   |     |
|---|-----|
| <b>Attenuator Element: Design attenuator with thermal noise using circuit objects or RF Budget Analyzer app</b> .....                                       | 4-3 |
| <b>RF Antenna Element: Design transmit antenna using circuit objects or RF Budget Analyzer app</b> .....  | 4-3 |
| <b>Transmission Line Elements: Model equation-based lossless and lossy transmission line elements using circuit objects or RF Budget Analyzer app</b> ..... | 4-3 |
| <b>Force Overwrite: Suppress warning message when overwriting existing files with rfwrite function</b> .....  | 4-3 |
| <b>Extract S-Parameters Examples: Extract S-parameters from circuits or mutual inductors</b> .....  | 4-4 |

## R2020b

|   |     |
|---|-----|
| <b>Harmonic Balance in RF Budget Analyzer App: Compute output power, IP2, NF, and SNR with nonlinear analysis</b> ..... | 5-2 |
| <b>Plots in RF Budget Analyzer App: Visualize budget results and S-parameters over stages and frequencies</b> .....     | 5-2 |
| <b>Comparison Reports in RF Budget Analyzer App: Compare Friis and Harmonic Balance budget results</b> .....            | 5-3 |
| <b>Transmission Line Elements: Model distributed elements in circuit objects and RF Budget Analyzer app</b> .....       | 5-4 |
| <b>Functionality being removed or changed</b> .....   | 5-5 |
| Phase Delay and Group Delay plots not supported in RF Budget Analyzer App .....   | 5-5 |

## R2020a

|  |     |
|--|-----|
| <b>New Rational Fitting Object: Fast and accurate time-domain modeling of S-parameters</b> .....                     | 6-2 |
| <b>Harmonic Balance in rfbudget Object: Nonlinear analysis of rfbudget objects, including IP2 calculations</b> ..... | 6-2 |

## R2019b

|  |     |
|--|-----|
| <b>Inverse Chebyshev Filter: Design inverse Chebyshev filters using command line or RF Budget Analyzer app</b> ..... | 7-2 |
| <b>generateSPICE function for rationalfit: Generate SPICE subcircuits for S-parameters rational fitting</b> .....    | 7-2 |
| <b>setrfplot function for rfplot: Toggle the scale X-axis of rfplot between scalar and engineering units</b> .....   | 7-2 |

## R2019a

|   |     |
|---|-----|
| <b>Test, visualize, and enforce passivity of rationalfit output</b> ..... | 8-2 |
| <b>RF Filter element in RF Budget Analyzer app</b> .....                  | 8-2 |
| <b>Design narrowband matching networks for RF circuits</b> .....          | 8-3 |

## R2018b

|  |     |
|--|-----|
| <b>S-parameters Plotting in RFBudgetAnalyzer App: Plot S-parameter magnitude, phase, and group delay for the stages of a budget object</b> ..... | 9-2 |
| <b>RF Filter Element: Design a behavioral model of an RF filter and add it to an RF circuit</b> .....  | 9-2 |
| <b>Functionality being removed or changed</b> .....  | 9-2 |
| smithchart will be removed .....   | 9-2 |

## R2018a

|   |      |
|---|------|
| <b>Smith and Polar Plots in RF Budget Analyzer App: Visualize input and output impedances, forward gain budget, and reverse isolation across signal bandwidth</b> ..... | 10-2 |
| <b>Improved smithplot Function: Visualize network parameters for rfckt, rfddata, nport, and sparameters objects and support the circle function</b> .....               | 10-2 |

## R2017b

|  |      |
|--|------|
| <b>smithplot Function: Visualize network parameters, data, and markers on a Smith chart</b> .....    | 11-2 |
| <b>Plot button in RF Budget Analyzer App: Visualize budget results across signal bandwidth</b> ..... | 11-2 |

## R2017a

|   |      |
|---|------|
| <b>Zero IF Support in rfBudgetAnalyzer App: Analyze direct conversion transmitters and receivers</b> .....          | 12-2 |
| <b>MATLAB Functionality for RF Budget Analysis: Script and automate RF budget analysis</b> .....                    | 12-2 |
| <b>Generation of MATLAB script from rfBudgetAnalyzer App: Automate scripting for RF budget analysis</b> .....       | 12-2 |
| <b>Amplifier and Modulator Objects: Build networks of active and passive components using circuit objects</b> ..... | 12-3 |

## R2016b

No New Features or Changes

## R2016a

|  |      |
|--|------|
| <b>RF Budget Analyzer: Analytically compute gain, noise figure, and IP3 for cascaded RF components</b> ..... | 14-2 |
|--|------|

## R2015b

|   |      |
|---|------|
| <b>LC Ladder Objects: Build different ladder configurations of LC elements and include them in arbitrary networks</b> ..... | 15-2 |
|---|------|

|   |      |
|---|------|
| <b>Group Delay Calculation: Compute the group delay for networks with arbitrary topologies and for any S-parameter data</b> ..... | 15-2 |
| <b>rationalfit Function Examples: Learn best practices for fitting S-parameter data</b> .....                                     | 15-2 |

## R2015a

|   |      |
|---|------|
| <b>N-Port S-Parameters Circuit Element: Analyze RF networks containing S-parameter components</b> ..... | 16-2 |
| <b>T-Parameters Data Object: Store and convert T-parameters data from other formats</b> .....           | 16-2 |
| <b>rfplot Improvements: Plot real, imaginary, magnitude, or angle data</b> .....                        | 16-2 |

## R2014b

|  |      |
|--|------|
| <b>Gain, noise figure, and IP3 cascade analysis for general RF stages</b> . . . .            | 17-2 |
| <b>Network parameter object improvements for conversion of any network data object</b> ..... | 17-2 |

## R2014a

|  |      |
|--|------|
| <b>General de-embedding function for 2N-port S-parameters</b> .....                  | 18-2 |
| <b>N-port Touchstone file writing from any network data object or raw data</b> ..... | 18-2 |
| <b>rationalfit function at least six times faster</b> .....                          | 18-2 |

## R2013b

|   |      |
|---|------|
| <b>Additional functions for constructing arbitrary RLC networks</b> ..... | 19-2 |
| <b>S-parameter extraction for arbitrary RLC networks</b> .....            | 19-2 |



## R2013a

|  |             |
|--|-------------|
| <b>Improved rationalfit function</b> ..... | <b>20-2</b> |
|--|-------------|

## R2012b

|   |             |
|---|-------------|
| <b>Network parameter interface improvements for faster reading of<br/>Touchstone files, plotting, and converting parameters</b> ..... | <b>21-2</b> |
| <b>Name-value pair syntax for rationalfit function</b> .....  | <b>21-2</b> |

## R2012a

|   |             |
|---|-------------|
| <b>New Visualization Option for Intermediate-Frequency (IF) Planning<br/>Object</b> ..... | <b>22-2</b> |
| <b>Enhanced S-Parameter Conversion Functions</b> .....                                    | <b>22-2</b> |
| <b>New Demos for Signal Integrity Applications</b> .....                                  | <b>22-2</b> |
| <b>Enhanced Rational Fitting</b> .....  | <b>22-2</b> |

## R2011b

|   |             |
|---|-------------|
| <b>New Intermediate Frequency (IF) Planning Object</b> .....              | <b>23-2</b> |
| <b>New Functions for Calculating Transmission Line RLGC Parameters</b> .. | <b>23-2</b> |
| <b>Enhanced Rational Fitting</b> .....                                    | <b>23-2</b> |
| <b>Conversion of Error and Warning Message Identifiers</b> .....          | <b>23-2</b> |

## R2011a

### **Bug Fixes**

## R2010b

|  |      |
|--|------|
| <b>Enhanced Rational Function Modeling</b> .....                         | 25-2 |
| <b>Extended Methods and Parameters for RF Object Visualization</b> ..... | 25-2 |

## R2010a

|                             |      |
|-----------------------------|------|
| <b>Function Added</b> ..... | 26-2 |
| <b>Methods Added</b> .....  | 26-2 |
| <b>Demo Added</b> .....     | 26-2 |

## R2009b

|   |      |
|---|------|
| <b>New Function for Testing Passivity of S-Parameters</b> .....                     | 27-2 |
| <b>Expanded Port-Ordering Schemes for S-Parameter Conversion Functions</b><br>..... | 27-2 |
| <b>Support for Calculation of Power-Wave Gain for Transfer Functions</b> ...        | 27-2 |

## R2009a

|   |      |
|---|------|
| <b>New Functions for Converting 4N-Port S-Parameter Matrices</b> .....            | 28-2 |
| <b>Enhanced Dielectric Loss Model in Three Transmission Line Objects</b><br>..... | 28-2 |
| <b>Demos Added</b> .....  | 28-2 |

## R2008b

|   |      |
|---|------|
| <b>cascadesparams Function now supports N-port S-parameters</b> ..... | 29-2 |
|---|------|

|  |             |
|--|-------------|
| <b>Improvements to the plotty Method</b> ..... | <b>29-2</b> |
|--|-------------|

**R2008a**

|  |             |
|--|-------------|
| <b>Calculation and Plotting Metrics Added</b> .....          | <b>30-2</b> |
| <b>Network Parameter Conversion Functions Enhanced</b> ..... | <b>30-2</b> |
| <b>gammams and gammaml Functions Added</b> .....             | <b>30-2</b> |
| <b>z2gamma Function Added</b> .....                          | <b>30-2</b> |
| <b>Demos Added and Updated</b> .....                         | <b>30-2</b> |
| <b>Command-Line Help Updated</b> .....                       | <b>30-2</b> |

**R2007b**

|                                       |             |
|---------------------------------------|-------------|
| <b>snp2smp Function Added</b> .....   | <b>31-2</b> |
| <b>circle Method Added</b> .....      | <b>31-2</b> |
| <b>powergain Function Added</b> ..... | <b>31-2</b> |
| <b>Smith Chart Enhanced</b> .....     | <b>31-2</b> |
| <b>Demos Added and Updated</b> .....  | <b>31-2</b> |

**R2007a**

|  |             |
|--|-------------|
| <b>Agilent P2D and S2D System-Level Verification Model Support Added</b> ..... | <b>32-2</b> |
| <b>Mixer Spur Analysis Added</b> .....   | <b>32-2</b> |
| <b>timeresp Method Added</b> .....   | <b>32-2</b> |
| <b>Plotting Methods Added</b> .....  | <b>32-2</b> |
| <b>gamma2z Function Added</b> .....  | <b>32-3</b> |
| <b>Tab Completion Added</b> .....  | <b>32-3</b> |

|                                      |             |
|--------------------------------------|-------------|
| <b>Data Tips Added</b> .....         | <b>32-3</b> |
| <b>Demos Added and Updated</b> ..... | <b>32-3</b> |

## **R2006b**

|   |             |
|---|-------------|
| <b>S-Parameter Conversion Function Added</b> .....        | <b>33-2</b> |
| <b>rfmodel Class Added</b> .....                          | <b>33-2</b> |
| <b>rationalfit Function Added</b> .....                   | <b>33-2</b> |
| <b>freqresp and impulse Functions Added</b> .....         | <b>33-2</b> |
| <b>Support for Exporting Verilog-A Models Added</b> ..... | <b>33-2</b> |
| <b>Demos Added</b> .....                                  | <b>33-2</b> |

## **R2006a**

|   |             |
|---|-------------|
| <b>S-Parameter Conversion Functions Added</b> ..... | <b>34-2</b> |
|---|-------------|

## **R14SP3**

|   |             |
|---|-------------|
| <b>extract Function Added</b> .....   | <b>35-2</b> |
| <b>Circuit Object Added</b> .....   | <b>35-2</b> |
| <b>Transmission Line Object Improved</b> .....                                      | <b>35-2</b> |
| <b>Touchstone Data File Support Improved</b> .....                                  | <b>35-2</b> |
| <b>Demos Improved</b> .....   | <b>35-2</b> |
| <b>Command Window Help for Functions That Act on Circuit Objects Added</b><br>..... | <b>35-2</b> |

|   |             |
|---|-------------|
| <b>Plot Figures Integrated into the RF Tool GUI</b> ..... | <b>36-2</b> |
| <b>Five Objects Added</b> .....                           | <b>36-2</b> |
| <b>Three Circuit Objects Added</b> .....                  | <b>36-2</b> |
| <b>Methods Added</b> .....                                | <b>36-2</b> |
| <b>Method Enhanced</b> .....                              | <b>36-2</b> |
| <b>Functions Added</b> .....                              | <b>36-2</b> |
| <b>General Enhancements</b> .....                         | <b>36-2</b> |



# R2022b

---

**Version: 4.4**

**New Features**

## **RF Budget Object: Specify number of harmonics used for all tones in HB analysis**

Use the `HarmonicOrder` property in the `rfbudget` object to specify the number of harmonics that the object should use for all tones in harmonic balance (HB) analyses.

## **RF Budget Analyzer App: Model stripline and use network objects in S-parameters element**

The **RF Budget Analyzer** app now supports:

- Adding a `txlineStripline` element to your RF system
- Using the network objects created at MATLAB® command line to define an S-parameter element.

## **Time Response Function: Compute time response of rational objects with initial states**

The `timeresp` function now supports initial states to compute the time response of a `rational` and a `rationalfit` objects.

## **Overview topics: RF filter, matching network, and high-speed backplane design**

Design an RF filter, matching network, and high-speed backplane using these overview topics:

- “RF and Microwave Filter Modeling”
- “Designing Matching Networks in RF Systems”
- “Model and Analyze High-Speed Backplanes”



# R2022a

---

**Version: 4.3**

**New Features**

**Compatibility Considerations**

## **RF System object: Model MISO and SIMO, and add Simulink Inports and Outports**

The `rfsystem` System object now supports:

- Modeling multiple-input and single-output (MISO) and single-input and single-output (SIMO) systems
- Adding Simulink® inports and outports to your RF Blockset™ model
- Exporting your RF system to the **RF Budget Analyzer** app
- Adding your RF Blockset model to memory using the `load_system` function
- Specifying whether to save your RF Blockset model with its current name or to close it without saving using the `close_system` function

## **Amplifier Element: Model RF amplifier using network parameters and two-port Touchstone file**

The `amplifier` object now supports modeling an RF amplifier element using network parameters and a two-port Touchstone file.

## **RF Antenna Element: Model antenna in Transmit-Receive configuration in RF Budget Analyzer app**

The `rfantenna` object now supports modeling antennas in a transmit-receive configuration. You can add an RF antenna modeled as a transmit-receive to your RF system designed using the **RF Budget Analyzer** app. You can also export this RF system to an RF Blockset or to an `rfsystem` System object for circuit envelope analysis.

## **Noise Parameters Function: Extract or build noise data from two-port Touchstone file or noise figure data**

Use the `noiseParameters` function to extract or build noise data from a two-port Touchstone file or noise figure data, respectively.

## **IMT Mixer Element: Model mixer with intermodulation table**

Use the `mixerIMT` object to model a mixer with an intermodulation table (IMT). You can also add an IMT mixer to your RF system designed using the **RF Budget Analyzer** app and then export this RF system to RF Blockset.

## **Stripline Element: Model stripline transmission line element**

Use the `txlineStripline` object to model a stripline transmission line element.

## **Delete Function: Delete circuit object**

Use the `delete` function to delete a circuit object and decouple its elements. You can then use the decoupled elements in other circuit objects.

---

## RF Plot: Plot S-parameter data with multiple indices and mixer spurs

The `rfplot` function now supports the plotting of S-parameter data with multiple indices and an interactive legend. You can also use the new IMT mixer `rfplot` function to plot mixer spurs.

## S-parameters: Calculate S-parameter of stripline and IMT mixer elements

The `sparameters` object now supports calculating S-parameter data of a stripline transmission line and IMT mixer elements.

## Functionality being removed or changed

### **rftool** function will be removed

*Warns*

`rftool` is not recommended. Use the **RF Budget Analyzer** app instead.

To update your code, change instances of the function name `rftool` to `rfBudgetAnalyzer`.

Unlike the `rftool` function, the **RF Budget Analyzer** app supports gain, noise figure, IP2, and IP3 analysis of cascaded RF elements and export to RF Blockset.

### **smithchart** function will be removed

*Warns*

`smithchart` is not recommended. Use `smithplot` instead.

To update your code, change instances of the function name `smithchart` to `smithplot` if you have not specified any output arguments. If you have specified output arguments in your code, you must use the new syntaxes of the `smithplot` function to plot your data.

Unlike the `smithchart` function, `smithplot` supports interactive context menus, axes, and marker capabilities.

### **writeva** function will support only one-port rational object

*Behavior change*

Starting in R2022a, the `writeva` function will support only one-port rational object.

## Compatibility Considerations

When you open a model created before R2022a that contains the `writeva` function using a two-port rational object, the software throws an error asking you to update your code with a one-port rational object in the `writeva` function.



# R2021b

---

**Version: 4.2**

**New Features**

**Bug Fixes**

**Compatibility Considerations**

## **Richards'-Kuroda Workflow: Apply Richards' and Kuroda's transformations to circuit objects**

Use the following functions and object to apply Richards' and Kuroda's transformations to circuit objects.

- Use the `richards` function to convert a lumped element circuit to a distributed element circuit.
- Use the `kuroda` function to apply Kuroda's transformation to a circuit with two cascaded ideal transmission lines and a possible ideal transformer.
- Use the `insertUnitElement` function to insert a unit element into a circuit object.
- Use the `realize` function to realize a circuit containing electrical-length based transmission lines using standard microstrip transmission lines.
- Use the `txlineElectricalLength` object to create an electrical-length based transmission line.

## **Phase Shift Element: Design phase shift element using circuit objects or RF Budget Analyzer app**

Use the `phaseshift` circuit object to shift the output of the amplifier at the command line. You can also add a phase shift element in an RF system using the **RF Budget Analyzer** app and then export the circuits to RF Blockset.

## **RF Antenna Element: Design receiver antenna using circuit objects or RF Budget Analyzer app**

Use the `rfantenna` object to design an RF receiver antenna element at the command line. You can also import your designed antenna receiver element from the **Antenna Designer** (Antenna Toolbox) app in Antenna Toolbox™. You can also add this RF antenna element in the system designed in the **RF Budget Analyzer** app to design an antenna element modeled as a receiver.

To import your antenna design from the Antenna Designer app, you must have an Antenna Toolbox license.

## **Microstrip Transmission Line: Design standard, inverted, embedded, and suspended microstrip transmission lines**

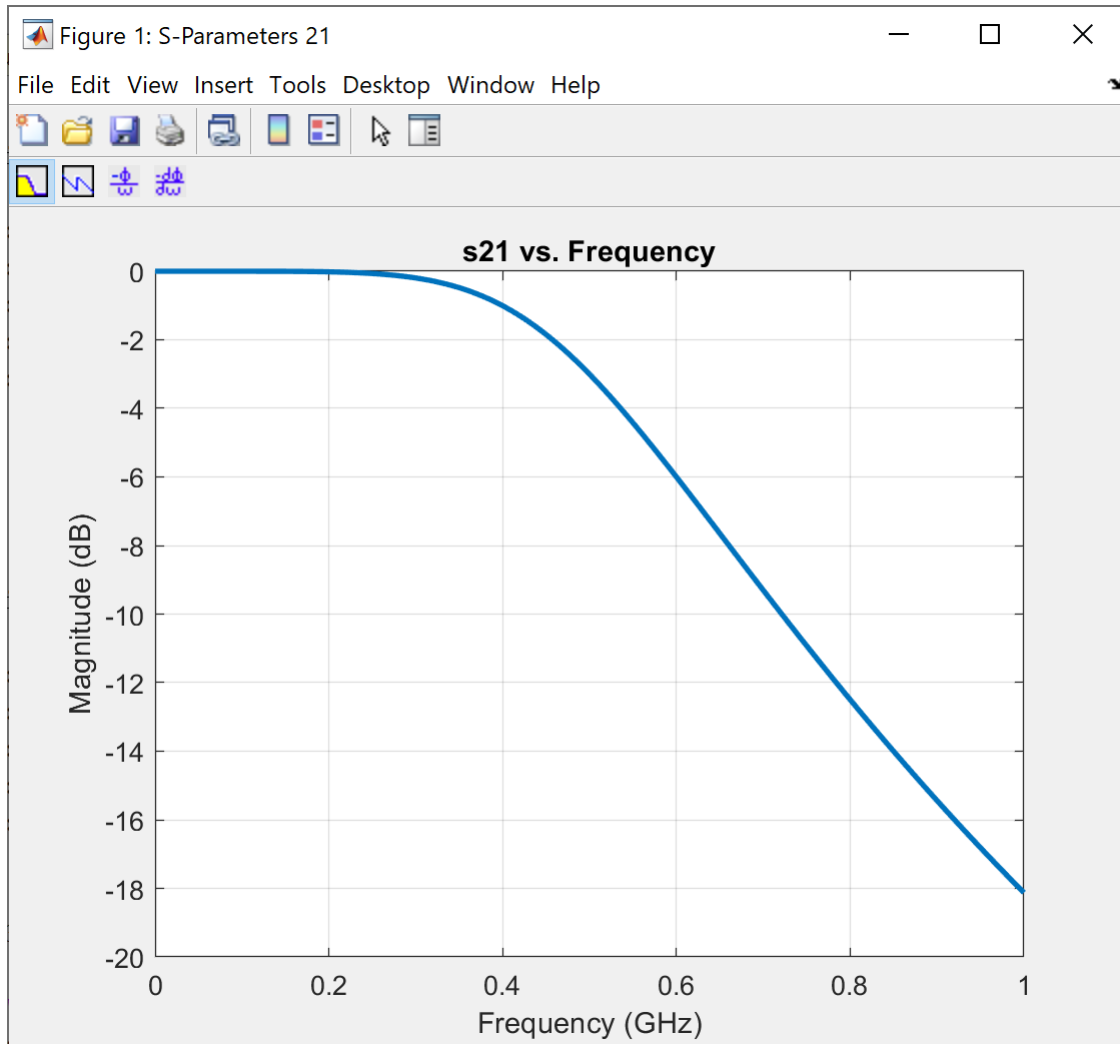
Use the `txlineMicrostrip` circuit object to design standard, inverted, embedded, and suspended microstrip transmission lines using two new properties, `Type` and `DielectricThickness`.

## **LC Ladder Element: Design LC ladder in RF budget chain or RF Budget Analyzer app**

Use the `lcladder` object in a `rfbudget` object to design an RF chain at the command line. You can also add an LC ladder element to the RF system using the **RF Budget Analyzer** app and export the circuits to RF Blockset.

## RF Plot: Support for LC ladder element

Use the `rfplot` function to plot the S-parameters of the LC ladder element `lcLadder`.



## Group Delay, Noise Figure, and S-parameters: Support for electrical length transmission line

Use the `groupdelay`, `noisefigure`, and `sparameters` functions to calculate the group delay, noise figure, and S-parameters, respectively of the `txlineElectricalLength` object.

## Functionality being removed or changed

### Coplanar waveguide transmission line object changed

*Behavior change*

Starting in R2021b, the `txlineCPW` circuit object has a new property, `ConductorBacked`. Use this property to design a coplanar waveguide (CPW) transmission line with a bottom ground plane and conductor backing.

## Compatibility Considerations

When you open a model created before R2021b that contains the `txlineCPW` circuit object, the software replaces the object with the R2021b version of the object and sets the `ConductorBacked` property to `0`.



# R2021a

---

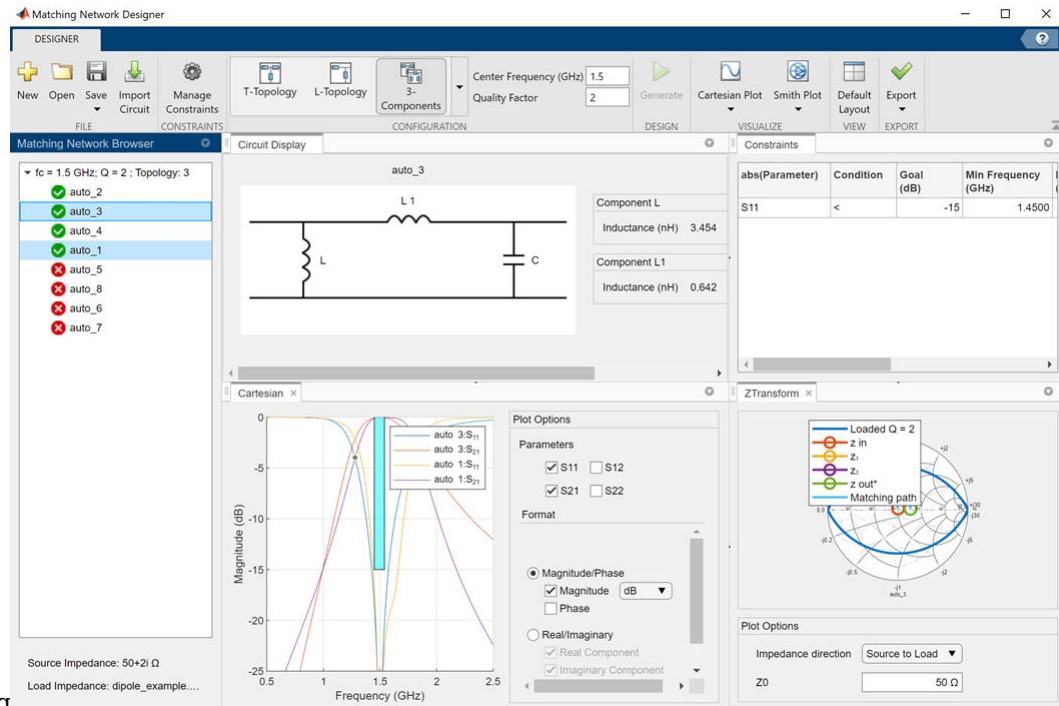
**Version: 4.1**

**New Features**

**Bug Fixes**

## Matching Network Designer App: Design, visualize, and compare matching networks for one-port load

Use the **Matching Network Designer** app to design, visualize, and compare matching networks for one-port load. You can also use this app to design two- and three-component lumped element



matching

## RF System Object: Create System object for circuit envelope simulation in MATLAB

Use the `rfsystem` System object™ to perform a circuit envelope simulation of an RF system designed using an `rfbudget` object.

To use this System object, you must have an RF Blockset™ license.

## Piecewise Linear Response: Calculate time responses of rational or `rffmodel.rational` objects to piecewise linear input signal

Use the `pwlresp` function to calculate time responses of a `rational` or an `rffmodel.rational` object to a piecewise linear input signal.

## Relative Error Metrics and Noise Floor: Improve quality of rational fitting with relative error metrics and noise floor specification

Set the 'ErrorMetric' property to 'Relative' in a `rational` object to perform rational fitting to fit both peaks and valleys, and use the 'NoiseFloor' property to ignore low-level noise in the data of the fitter.

---

## **Series and Shunt RLC Elements: Design series and shunt RLC networks using circuit objects or RF Budget Analyzer app**

Use the `seriesRLC` and `shuntRLC` circuit objects to design series and shunt RLC networks at the command line. You can also add series and shunt RLC elements in the RF system using the **RF Budget Analyzer** app and export the circuits to RF Blockset.

## **Attenuator Element: Design attenuator with thermal noise using circuit objects or RF Budget Analyzer app**

Use the `attenuator` object to design an attenuator element at the command line. You can also add an attenuator element in the RF system using the **RF Budget Analyzer** app and export the circuits to RF Blockset.

## **RF Antenna Element: Design transmit antenna using circuit objects or RF Budget Analyzer app**

Use the `rfantenna` object to design an RF antenna element at the command line. You can also import your antenna design from the **Antenna Designer** (Antenna Toolbox) app in the Antenna Toolbox™. You can also add an RF antenna element in the system designed in the **RF Budget Analyzer** app to design an antenna element modeled as a transmitter.

To import your antenna design from the Antenna Designer app, you must have an Antenna Toolbox license.

## **Transmission Line Elements: Model equation-based lossless and lossy transmission line elements using circuit objects or RF Budget Analyzer app**

Use these circuit objects to model different types of transmission lines at the command line.

- `txlineEquationBased` — Equation-based transmission line
- `txlineDelayLossless` — Transmission line without time delay
- `txlineDelayLossy` — Transmission line with time delay

You can also add your transmission line elements to the RF system created in the **RF Budget Analyzer** app to design cascaded systems.

## **Force Overwrite: Suppress warning message when overwriting existing files with `rfwrite` function**

If you want to suppress the warning message while overwriting the files using the `filename` argument, set the 'ForceOverwrite' name-value argument in the `rfwrite` function to `true`.

## **Extract S-Parameters Examples: Extract S-parameters from circuits or mutual inductors**

This release introduces two examples that show how to extract S-parameters using the Symbolic Math Toolbox™.

- The Extract S-Parameters from Circuit example shows how to derive analytical expressions for S-parameters of circuits using Symbolic Math Toolbox™.
- The Extract S-Parameters from Mutual Inductor example shows how to build user-defined element or a mutual inductor from S-parameters and add it to an `rfbudget` object for link budget analysis using the Symbolic Math Toolbox.

To run both the examples, you must have a Symbolic Math Toolbox license.

# R2020b

---

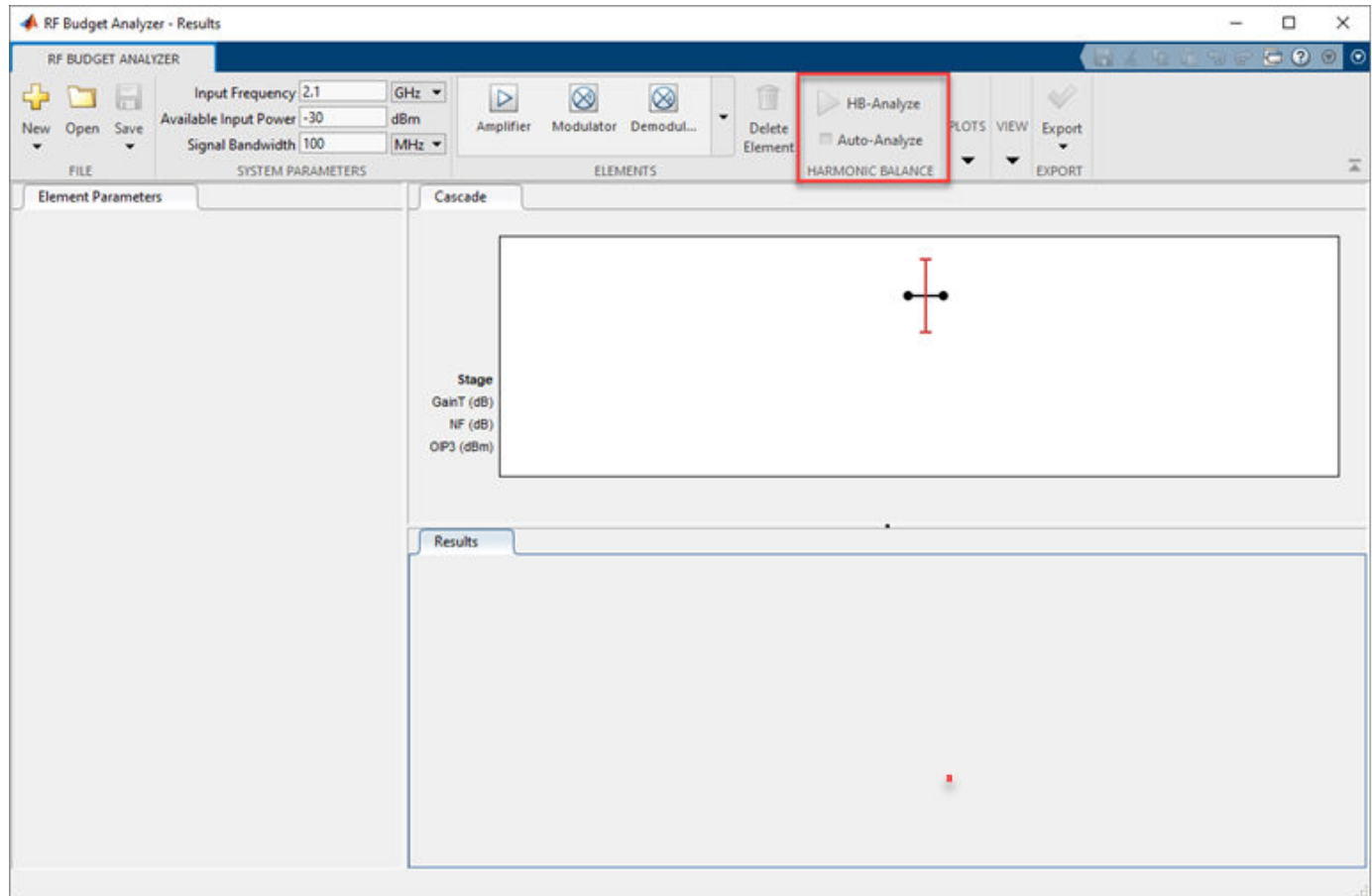
**Version: 4.0**

**New Features**

**Compatibility Considerations**

## Harmonic Balance in RF Budget Analyzer App: Compute output power, IP2, NF, and SNR with nonlinear analysis

Use the **RF Budget Analyzer** to compute nonlinear effects using harmonic balance analysis with the **HB analyze** button.

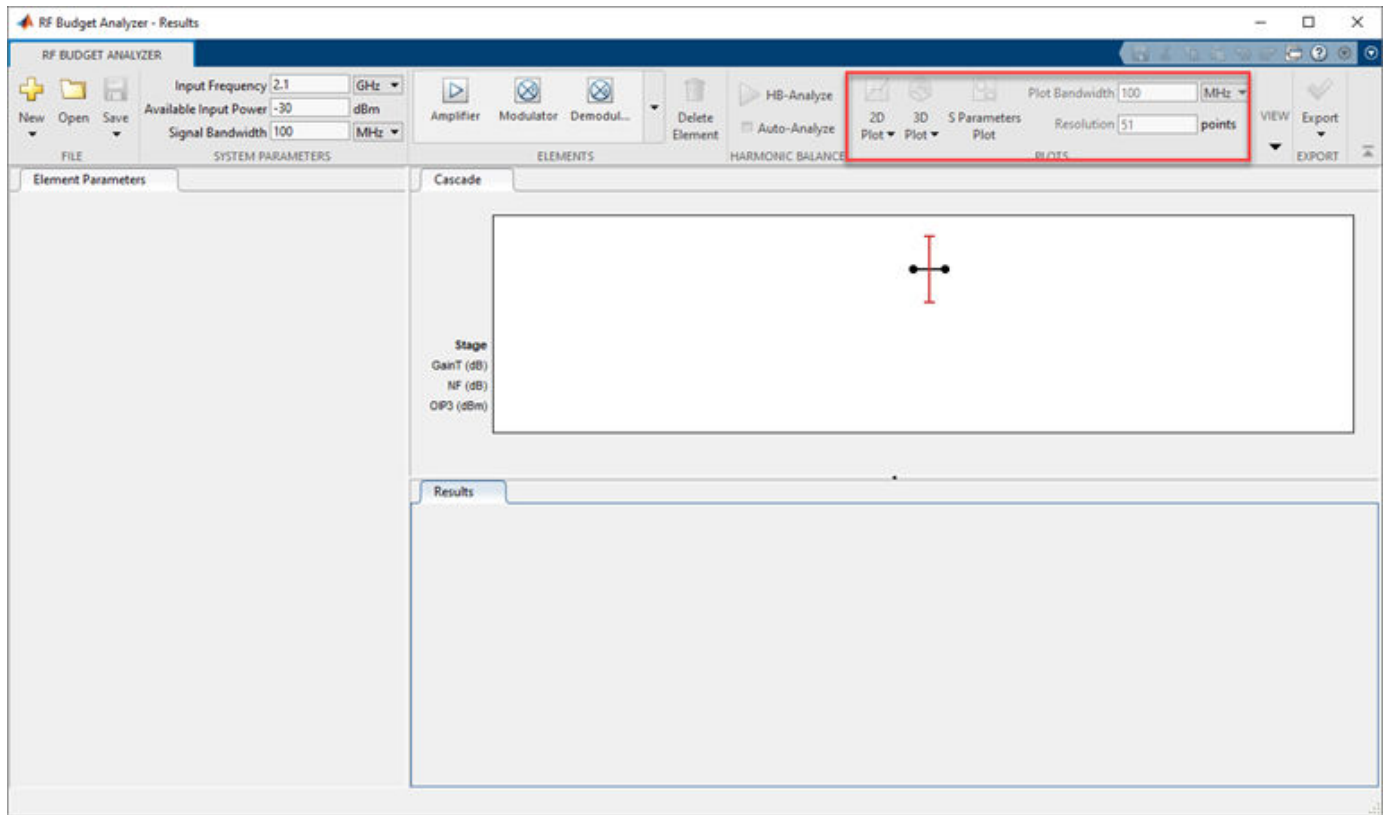


## Plots in RF Budget Analyzer App: Visualize budget results and S-parameters over stages and frequencies

Use the updated plots tab in the **RF Budget Analyzer** to visualize:

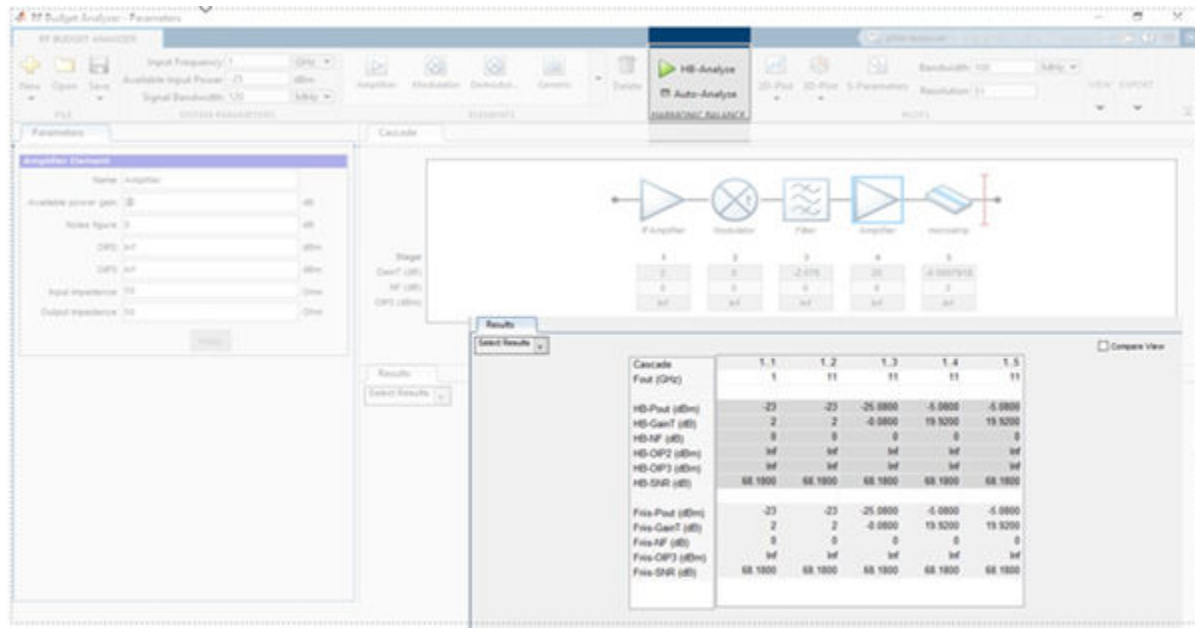
- 2-D and 3-D plots.
- S-parameter plots
- Frequency range and resolution field

Plots open docked tabs in the **Results** section of the app window. To restore the default app window layout, use the **Default Layout** button in the **View** tab.



## Comparison Reports in RF Budget Analyzer App: Compare Friis and Harmonic Balance budget results

Use the updated **RF Budget Analyzer** app to compare Friis and harmonic balance analysis using the **Results** section of the app window.



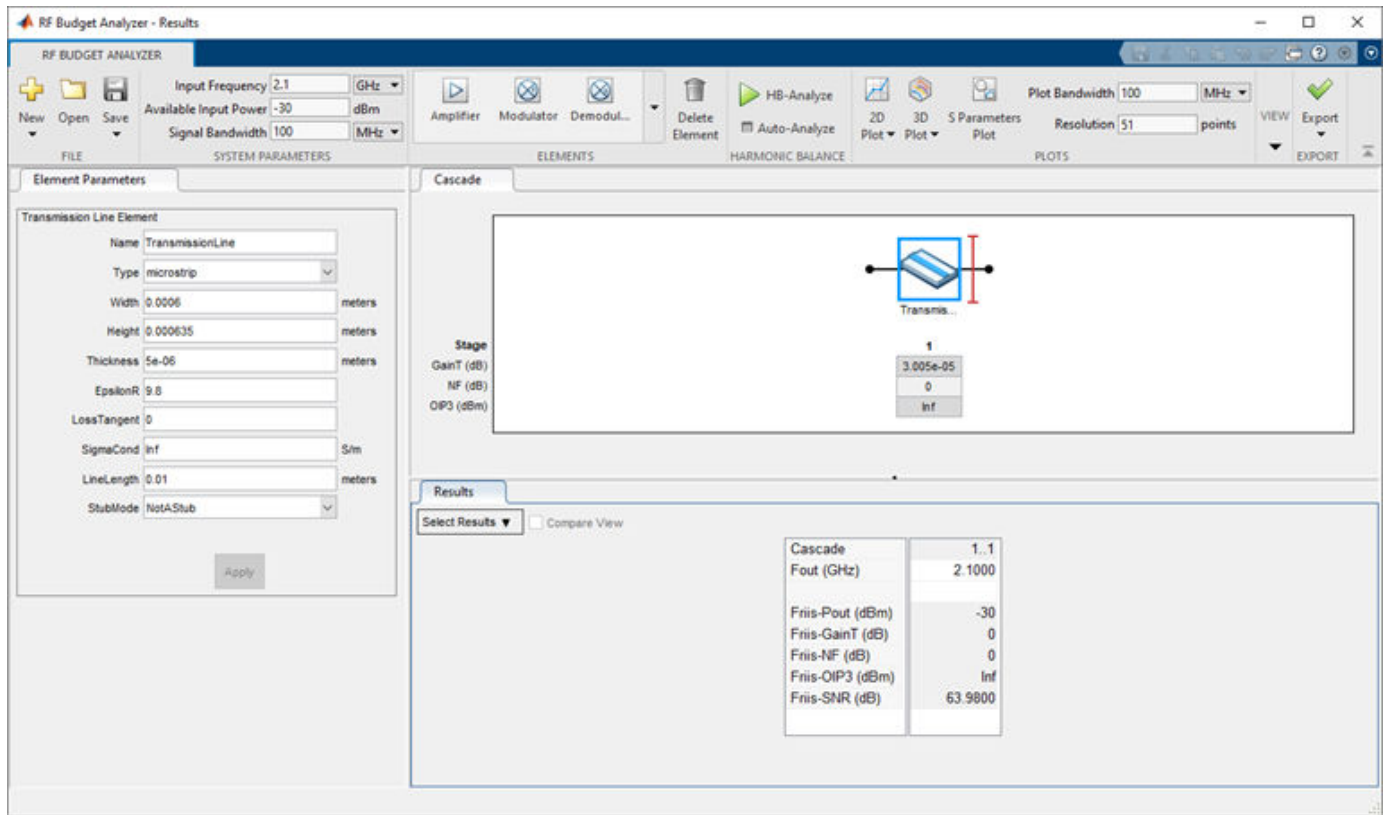
## Transmission Line Elements: Model distributed elements in circuit objects and RF Budget Analyzer app

Use the following objects to create different types of transmission lines at the command line:

- `txlineMicrostrip` — Microstrip transmission line
- `txlineCoaxial` — Coaxial transmission line
- `txlineCPW` — Coplanar waveguide transmission line
- `txlineParallelPlate` — Parallel plate transmission line
- `txlineTwoWire` — Two wire transmission line
- `txlineRLCGLine` — RLCG line transmission line

You can also add transmission lines to systems created in the **RF Budget Analyzer** app.





## Functionality being removed or changed

### Phase Delay and Group Delay plots not supported in RF Budget Analyzer App

#### *Behavior change*

Phase and Group Delay plotting not supported from R2020b in **RF Budget Analyzer** app.



# R2020a

---

**Version: 3.8**

**New Features**

## **New Rational Fitting Object: Fast and accurate time-domain modeling of S-parameters**

Use the `rational` function to perform rational fitting to complex frequency-dependent data.

## **Harmonic Balance in `rfbudget` Object: Nonlinear analysis of `rfbudget` objects, including IP2 calculations**

You can now use the `rfbudget` object to compute nonlinear effects such as IP2 and output power with saturation.

# R2019b

---

**Version: 3.7**

**New Features**

## **Inverse Chebyshev Filter: Design inverse Chebyshev filters using command line or RF Budget Analyzer app**

Use the `rffilter` object to design an inverse Chebyshev filter using the command line. You can also use the RF Budget Analyzer app to design the inverse Chebyshev filter and export the filter to RF Blockset or a measurement testbench.

## **generateSPICE function for rationalfit: Generate SPICE subcircuits for S-parameters rational fitting**

Use the `generateSPICE` function to convert `rationalfit` output of S-parameters into SPICE subcircuits for simulation.

## **setrfplot function for rfplot: Toggle the scale X-axis of rfplot between scalar and engineering units**

Use the `setrfplot` function to toggle the scale of `rfplot` X-axis between scalar units and engineering units (k, M, G, and so on).

# R2019a

---

**Version: 3.6**

**New Features**

## Test, visualize, and enforce passivity of rationalfit output

The `rationalfit` function converts frequency-domain S-parameters into rational functions that can be used for time-domain simulations. These simulations require the fit output to be passive. So, you can use the `ispassive` function to test the passivity of the `rationalfit` output. Use the `passivity` function to visualize the passivity of the `rationalfit` output. Use the `makepassive` function to enforce the passivity of the `rationalfit` output.

## RF Filter element in RF Budget Analyzer app

In previous releases, to include an RF Filter element for budget analysis, you had to model it using the `rffilter` object at the command line and export its S-parameters as an `nport` object. You could then import the `nport` object into the app.

In this release, RF filter is now a budget element and can be directly added to the budget chain. You can also export the filter element into the RF Blockset, RF measurement testbench, a MATLAB script, or the MATLAB workspace.

RF Budget Analyzer - Parameters

ANALYSIS

FILE DELETED ADD ELEMENTS PLOT EXPORT

Parameters x untitled x

**System Parameters**

Input frequency: 2.1 GHz

Available input power: -30 dBm

Signal bandwidth: 100 MHz

**Filter Element**

Name: Filter

Filter type: Butterworth

Response type: Bandpass

Implementation: LC Tee

Use filter order

Filter order: 3

Passband freq(s): [2 3] GHz

Passband attenuation: 3.0103 dB

Input impedance: 50 Ohm

Output impedance: 50 Ohm

Apply

Click 'Apply' to update Filter parameters.

**Stage 1**

|            |        |
|------------|--------|
| GainT (dB) | -19.38 |
| NF (dB)    | 0      |
| OP3 (dBm)  | Inf    |

**Cascade 1.1**

|            |        |
|------------|--------|
| Fout (GHz) | 2.1    |
| Pout (dBm) | -49.38 |
| GainT (dB) | -19.38 |
| NF (dB)    | 0      |
| OP3 (dBm)  | Inf    |
| SNR (dB)   | 63.98  |



---

## Design narrowband matching networks for RF circuits

Use the `matchingnetwork` object to design a set of circuits that match the impedance of a given source to the impedance of a given load at the specified center frequency. You can also export the matching network as `circuit` elements.

```
m = matchingnetwork % Default matching network
```

```
matchingnetwork with properties:
```

```
SourceImpedance: 50 Ohms  
LoadImpedance: 50 Ohms  
CenterFrequency: 1 GHz  
Components: 2  
Circuit: [1x2 circuit]
```



# R2018b

---

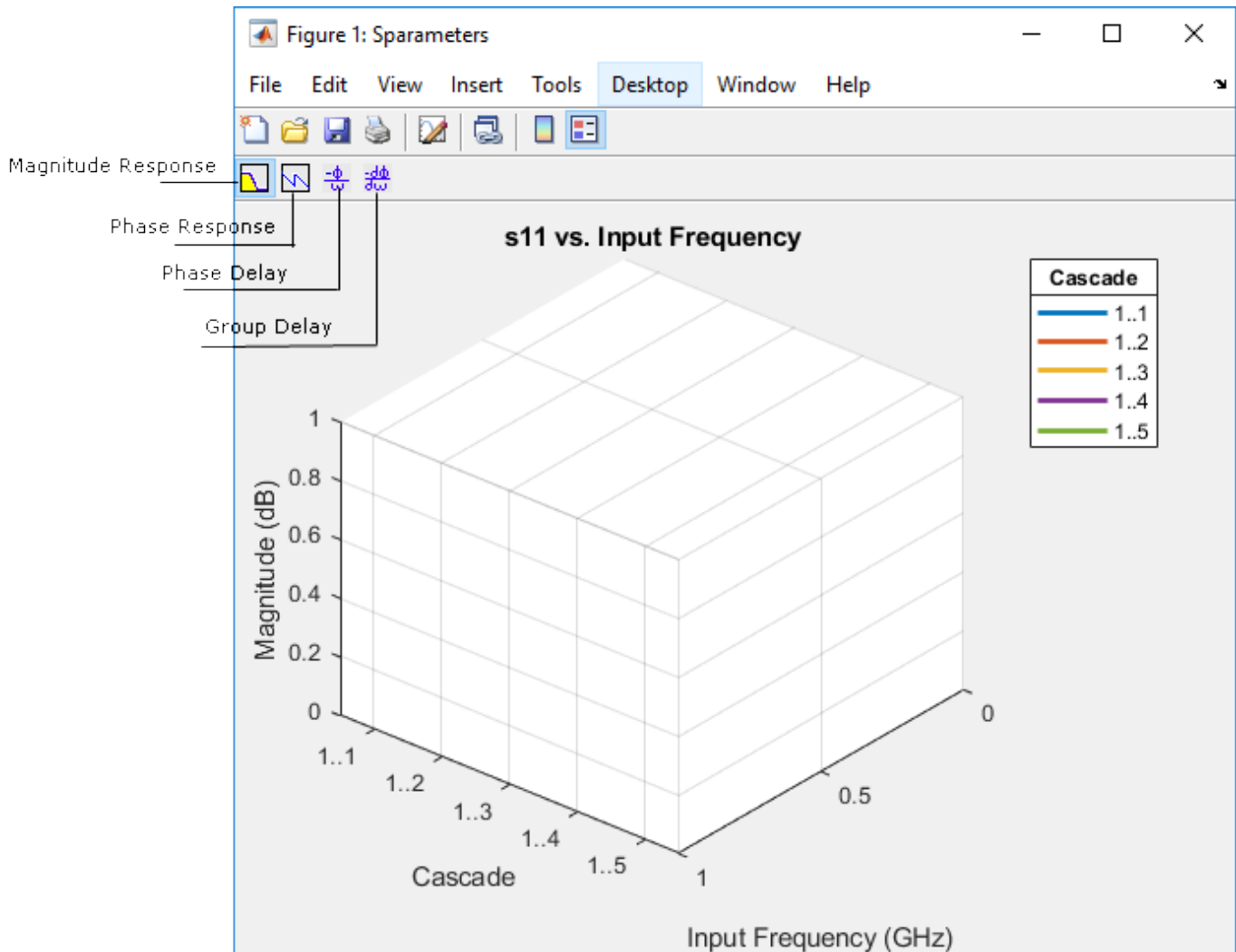
**Version: 3.5**

**New Features**

**Compatibility Considerations**

## S-parameters Plotting in RFBudgetAnalyzer App: Plot S-parameter magnitude, phase, and group delay for the stages of a budget object

You can now use the **RF Budget Analyzer** app plot button S-Parameters option to plot the magnitude, phase, and group delay of an RF system.



## RF Filter Element: Design a behavioral model of an RF filter and add it to an RF circuit

Use the `rffilter` object to build lowpass, highpass, bandpass or bandstop Butterworth and Chebyshev filters. You can also use the `rffilter` object as a circuit element.

## Functionality being removed or changed

**smithchart will be removed**

*Still runs*

---

smithchart will be removed in a future release. Use smithplot instead.

| <b>Function Name</b> | <b>What Happens When You Use This Function</b> | <b>Use This Function Instead</b> | <b>Compatibility Considerations</b>   |
|----------------------|--|----------------------------------|---|
| smithchart           | Still runs                                     | smithplot                        | Replace all instances of smithchart function with smithplot function using smithplot. |



# R2018a

---

**Version: 3.4**

**New Features**

## **Smith and Polar Plots in RF Budget Analyzer App: Visualize input and output impedances, forward gain budget, and reverse isolation across signal bandwidth**

Use the **Smith** and **Polar** buttons in the **RF Budget Analyzer** app to plot output impedances, forward gain budget, RF system S-parameters, and reverse isolation across signal bandwidths.

## **Improved smithplot Function: Visualize network parameters for rfckt, rfddata, nport, and sparameters objects and support the circle function**

Use the smithplot function to visualize network parameters for rfckt, rfddata, rfbudget, and nport objects.



# R2017b

---

**Version: 3.3**

**New Features**

## **smithplot Function: Visualize network parameters, data, and markers on a Smith chart**

Use the `smithplot` function to visualize data and network parameters with improved markers.

## **Plot button in RF Budget Analyzer App: Visualize budget results across signal bandwidth**

Use the **Plot** button to visualize cumulative RF budget results versus cascade input frequency from within the **RF Budget Analyzer** app.

# R2017a

---

**Version: 3.2**

**New Features**

## Zero IF Support in rfBudgetAnalyzer App: Analyze direct conversion transmitters and receivers

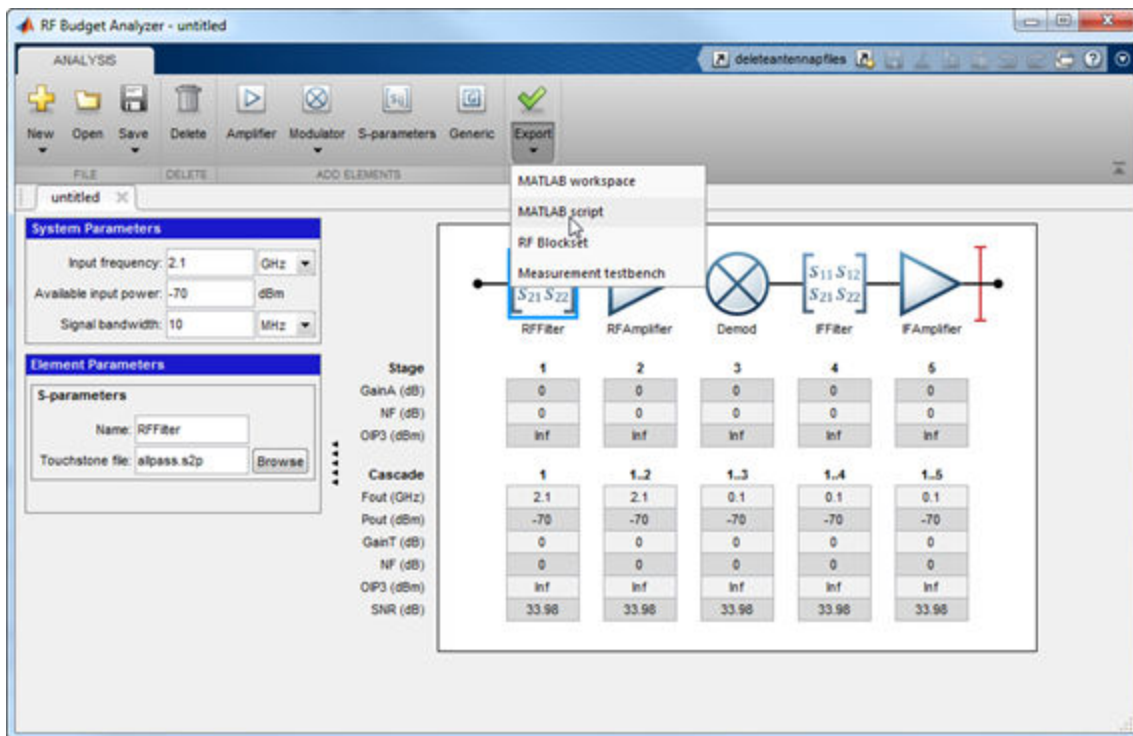
You can now use the **RF Budget Analyzer** app to analyze direct conversion and low-IF transmitters and receivers.

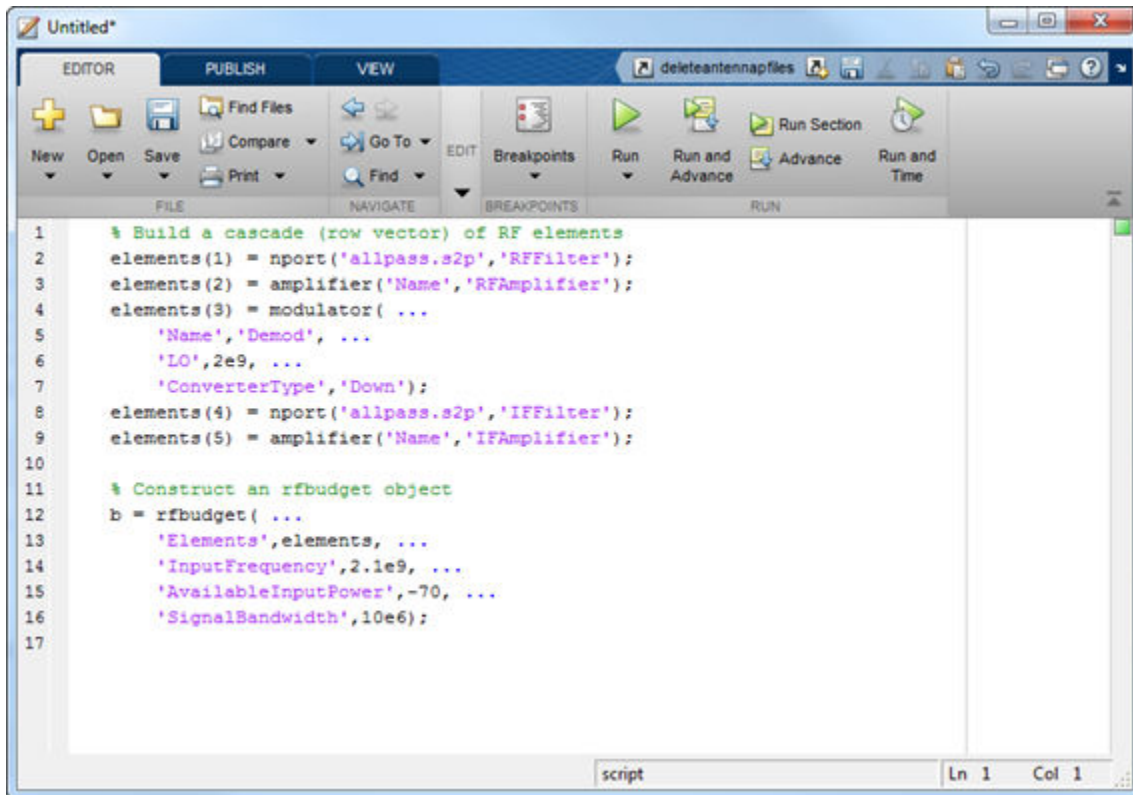
## MATLAB Functionality for RF Budget Analysis: Script and automate RF budget analysis

Use the `rfbudget` class to compute the cumulative gain, noise figure, and third intercept point (IP3) for an RF circuit created using RF elements. You can also use the `show` function to view the analysis on the **RF Budget Analyzer** app.

## Generation of MATLAB script from rfBudgetAnalyzer App: Automate scripting for RF budget analysis

In the **RF Budget Analyzer**, under **Export** tab, click **MATLAB Script** to create a MATLAB script of the RF circuit and RF budget analysis. The figure shows you how to create the script of an RF circuit and its budget analysis.





```
1 % Build a cascade (row vector) of RF elements
2 elements(1) = nport('allpass.s2p','RFFilter');
3 elements(2) = amplifier('Name','RFAmplifier');
4 elements(3) = modulator( ...
5     'Name','Demod', ...
6     'LO',2e9, ...
7     'ConverterType','Down');
8 elements(4) = nport('allpass.s2p','IFFilter');
9 elements(5) = amplifier('Name','IFAmplifier');
10
11 % Construct an rfbudget object
12 b = rfbudget( ...
13     'Elements',elements, ...
14     'InputFrequency',2.1e9, ...
15     'AvailableInputPower',-70, ...
16     'SignalBandwidth',10e6);
17
```

## Amplifier and Modulator Objects: Build networks of active and passive components using circuit objects

Use the `amplifier`, `modulator`, and `rfelement` to build RF circuits. You can also analyze the RF budget of the circuit by using the `rfbudget` class.



# R2016b

---

**Version: 3.1**

**No New Features or Changes**





# R2016a

---

**Version: 3.0**

**New Features**

## **RF Budget Analyzer: Analytically compute gain, noise figure, and IP3 for cascaded RF components**

You can use the RF Budget Analyzer app to compute the per-stage and cumulative gain, noise figure, and third intercept point (IP3) for a system of RF elements. Export the computed values to the MATLAB workspace. Simulate the system using SimRF™. Verify the gain, noise figure, and IP3 using the SimRF testbench simulation. To learn how to use the app, see [Superheterodyne Receiver Using RF Budget Analyzer App](#).

# R2015b

---

**Version: 2.17**

**New Features**

## **LC Ladder Objects: Build different ladder configurations of LC elements and include them in arbitrary networks**

You can use the `lcLadder` class to create LC filters, calculate the S-parameters of the filters, and add the filters to an RF Toolbox circuit object.

## **Group Delay Calculation: Compute the group delay for networks with arbitrary topologies and for any S-parameter data**

You can use the `groupDelay` function to calculate the group delay of the S-parameters object and these RF network elements: `nport`, `circuit`, and `LC ladder`.

## **rationalfit Function Examples: Learn best practices for fitting S-parameter data**

Use these examples to understand how to improve the quality of `rationalfit` output:

- Using the 'NPoles' Parameter with `rationalfit`
- Using the 'Weight' Parameter with `rationalfit`
- Using the 'DelayFactor' Parameter with `rationalfit`

# 2015a

---

**Version: 2.16**

**New Features**

## **N-Port S-Parameters Circuit Element: Analyze RF networks containing S-parameter components**

You can use `nport` to create a linear nport circuit element from Touchstone files and s-parameter objects. Use the `add` function to add n-port element to circuit element.

## **T-Parameters Data Object: Store and convert T-parameters data from other formats**

You can create `tparameter` objects from touchstone files, network parameters, and `rfdata.network` objects using the `tparameters` data object function.

## **rfplot Improvements: Plot real, imaginary, magnitude, or angle data**

You can now use the `rfplot` function to specify the types of plot such as decibels (default), real, imaginary, absolute, or angle.

# R2014b

---

**Version: 2.15**

**New Features**

**Bug Fixes**

## **Gain, noise figure, and IP3 cascade analysis for general RF stages**

You can now compute the `gain`, `noise figure`, `oip3`, and `iip3` of cascaded networks using the `rfchain` object. Display the stage-by-stage results in a spreadsheet format using the `worksheet` method. Visualize the results using the `plot` method.

## **Network parameter object improvements for conversion of any network data object**

You can now convert `rfckt` or `rfddata.data` or `rfddata.network` objects into any network parameter objects including S-parameters, Y-parameters, ABCD-parameters objects.



# R2014a

---

**Version: 2.14**

**New Features**

**Bug Fixes**

## **General de-embedding function for 2N-port S-parameters**

You can now use the `deembedsparams` function to de-embed 2N-port fixture effects from 2N-port measurements. It supports both three-dimensional S-parameters data and S-parameter objects.

## **N-port Touchstone file writing from any network data object or raw data**

You can use the `rfwrite` function to write Touchstone files from three-dimensional network parameter data or any network parameter object (S-parameters, Y-parameters, Z-parameters, ABCD-parameters, etc.)

## **rationalfit function at least six times faster**

The `rationalfit` function now fits a rational model to S-parameter data at least six times faster than previous releases. This responsiveness improves both RF Toolbox command-line behavior and SimRF simulation of S-parameter blocks.

# R2013b

---

**Version: 2.13**

**New Features**

**Bug Fixes**

## **Additional functions for constructing arbitrary RLC networks**

In R2013b, the following new functions are available:

- resistor, capacitor, inductor, and circuit — Use the basic building functions of an RF circuit to construct RLC networks.
- add — Insert basic RF elements to a circuit.
- clone — Duplicate any existing RF elements or circuits.
- setports — Define node pairs as ports of a circuit.
- setterminals — Map the nodes of a circuit to terminals.

## **S-parameter extraction for arbitrary RLC networks**

The sparameters function now includes added functionality that you can use to calculate the S-parameters of RLC networks.

# R2013a

---

**Version: 2.12**

**Bug Fixes**

**Compatibility Considerations**

## Improved rationalfit function

This release introduces additional pole-searching optimizations to the `rationalfit` function algorithm. Models that the function returns in this release tend to have fewer poles than those in previous releases.

## Compatibility Considerations

To constrain the function results across releases and machine architectures, explicitly specify optional parameters such as error tolerance and number of poles when you call the function. Given a data set and corresponding frequencies, the function attempts to calculate a rational function approximation to within a given specification. However, the exact model that the function returns can differ between releases and machines, as the algorithm improves.

# R2012b

---

**Version: 2.11**

**New Features**

**Bug Fixes**

## **Network parameter interface improvements for faster reading of Touchstone files, plotting, and converting parameters**

New network parameter objects and functions are available, with support for:

- Reading Touchstone files
- Converting network parameters
- Plotting network parameters

Additionally, some functions have been updated to support the new interface. For more information, see RF Network Parameter Objects.

## **Name-value pair syntax for rationalfit function**

The `rationalfit` function now supports using name-value pairs for optional input arguments. Name-value pair arguments can be specified in any order and improve readability of code.



# R2012a

---

**Version: 2.10**

**New Features**

**Bug Fixes**

## New Visualization Option for Intermediate-Frequency (IF) Planning Object

The `OpenIF` object supports a new interactive, graphical interface for assessing spur information in a mixer chain. You access this interface using the new `show` method.

## Enhanced S-Parameter Conversion Functions

S-parameter conversion functions have been enhanced to support larger data sets. The following functions now support conversion between parameter sets of  $2N$ -port networks.

- `abcd2s`
- `abcd2y`
- `abcd2z`
- `s2abcd`
- `y2abcd`
- `z2abcd`

The `s2smm` function now supports mixed-mode conversions for  $N$ -port devices.

The following mixed-mode S-parameter functions now support mixed-mode conversions for  $2N$ -port devices:

- `s2scc`
- `s2scd`
- `s2sdc`
- `s2sdd`
- `smm2s`

## New Demos for Signal Integrity Applications

Two new signal-integrity demos are available in this version.

- The `Bandpass Filter Response` demo describes a procedure for designing and analyzing a simple bandpass filter using `rfckt` objects.
- The `MOS Interconnect and Crosstalk` demo reproduces Pillage and Rohrer's classic result from "Waveform Evaluation for Timing Analysis".

## Enhanced Rational Fitting

The `rationalfit` function has improved robustness, speed, and accuracy in this version.

# R2011b

---

**Version: 2.9**

**New Features**

**Bug Fixes**

**Compatibility Considerations**

## New Intermediate Frequency (IF) Planning Object

The OpenIF object supports a new partial workflow for multiband transmitter or receiver design. Use these objects to analyze intermediate frequencies (IFs) that do not produce interference (spurs) in operating bands.

## New Functions for Calculating Transmission Line RLGC Parameters

The `rlgc2s` and `s2rlgc` functions allow you to calculate the per-unit-length RLGC parameters of a transmission line from transmission-line S-parameters.

## Enhanced Rational Fitting

The `rationalfit` function has improved robustness, speed, and accuracy in this version.

## Compatibility Considerations

Some default values of `rationalfit` have changed. For more information, see the function reference page.

## Conversion of Error and Warning Message Identifiers

For R2011b, error and warning messages identifiers have changed in RF Toolbox software.

## Compatibility Considerations

If you have scripts or functions that use message identifiers that changed, you must update the code to use the new identifiers. Typically, message identifiers are used to turn off specific warning messages, or in code that uses a try/catch statement and performs an action based on a specific error identifier.

For example, the `rf:rfckt:seriesrlc:setpositive:NotAPositive` identifier has changed to `rf:rfbase:rfbase:setpositive:NotAPositive`. If your code checks for `rf:rfckt:seriesrlc:setpositive:NotAPositive`, you must update it to check for `rf:rfbase:rfbase:setpositive:NotAPositive` instead.

To determine the identifier for a warning, run the following command just after you see the warning:

```
[MSG,MSGID] = lastwarn;
```

This command saves the message identifier to the variable `MSGID`.

To determine the identifier for an error, run the following command just after you see the error:

```
exception = MException.last;  
MSGID = exception.identifier;
```

---

**Note** Warning messages indicate a potential issue with your code. While you can turn off a warning, a suggested alternative is to change your code so it runs warning-free.

---

# R2011a

---

**Version: 2.8.1**

**Bug Fixes**



# R2010b

---

**Version: 2.8**

**New Features**

**Compatibility Considerations**

## Enhanced Rational Function Modeling

An improved algorithm for the `rationalfit` function fits an accurate rational model to passive S-parameter data in less time than in previous versions. In addition, a new parameter specifies the number of iterations `rationalfit` attempts at each value for the number of poles.

## Compatibility Considerations

Default behavior for some parameters have changed:

- The number-of-poles argument `npoles` defaults to a minimum value of 0 in version 2.8, instead of 4, as in previous versions.
- `rationalfit` does not display a wait bar by default in this version. A new `showwaitbar` parameter allows you to specify whether `rationalfit` displays a wait bar.

For more information on using this function, see the `rationalfit` reference page.

## Extended Methods and Parameters for RF Object Visualization

RF Toolbox version 2.8 extends the Plots and Charts methods to include:

- Support for third-order intercept point and transducer power gain parameters, `IIP3` and `Gt`.
- A new method, `table`, for visualizing network data in the Variable Editor.



# R2010a

---

**Version: 2.7**

**New Features**

## Function Added

The `makepassive` function creates passive S-Parameters from any S-parameter array. Use this function to enforce strict numerical passivity on an array of S-parameters that represents a passive device.

## Methods Added

Two new methods for `rfmodel.rational` objects are available:

- The `ispassive` method tests global passivity of an `rfmodel.rational` object.
- The `stepresp` method calculates the response of an `rfmodel.rational` object to a step signal. You can use this function to perform time-domain reflectometry (TDR) and time-domain transmission (TDT) analysis.

## Demo Added

The Modeling a High-Speed Backplane (4-Port S-Parameters to Differential TDR and TDT) demo shows how to perform time-domain reflectometry (TDR) and time-domain transmission (TDT) analysis on network data.

# R2009b

---

**Version: 2.6**

**New Features**

**Bug Fixes**

## **New Function for Testing Passivity of S-Parameters**

The `ispassive` function checks the passivity of N-port S-parameter matrices.

## **Expanded Port-Ordering Schemes for S-Parameter Conversion Functions**

The functions `s2scc`, `s2scd`, `s2sdc`, `s2sdd`, `s2smm`, `s2smm` now support a third commonly-used port-ordering. For more information on using this feature, see the corresponding function reference page.

## **Support for Calculation of Power-Wave Gain for Transfer Functions**

The `s2tf` function can now calculate the power-wave gain of 2-port S-parameters. Calculation in terms of voltage is still the default option.

# R2009a

---

**Version: 2.5**

**New Features**

**Compatibility Considerations**

## New Functions for Converting 4N-Port S-Parameter Matrices

There are two new functions for converting between 4N-port single-ended S-parameter matrices and 2N-port mixed-mode S-parameter matrices:

- The `s2smm` function lets you convert 4N-port single-ended S-parameters to 2N-port mixed-mode S-parameters. You can view the 2N-port output data to see interactions, such as crosstalk, that are not apparent in the single-ended data. This lets you easily select the ports of interest for further analysis.
- The `smm2s` function lets you convert 2N-port mixed-mode S-parameters to 4N-port single-ended S-parameters.

## Enhanced Dielectric Loss Model in Three Transmission Line Objects

The following objects now provide a more realistic model for dielectric loss:

- `rfckt.coaxial`
- `rfckt.twowire`
- `rfckt.parallelplate`

To specify dielectric loss, you use a new property, `LossTangent`. This property replaces the `SigmaDiel` parameter.

## Compatibility Considerations

Your existing objects with a nonzero value for the `SigmaDiel` parameter no longer model dielectric loss. Instead, the objects issue a warning message and use the default value of zero for the `LossTangent` property when you use the `analyze` method.

## Demos Added

Two new demos show how to design broadband impedance matching networks for RF components:

- `Designing Broadband Matching Networks for Antennas` shows how to design a matching network for an antenna.
- `Designing Broadband Matching Networks (Part2:Amplifier)` shows how to design a matching network for an amplifier.

# R2008b

---

**Version: 2.4**

**New Features**

## **cascadesparams Function now supports N-port S-parameters**

You can now use the `cascadesparams` function to cascade the S-parameters of an arbitrary number of N-port devices to form a network. The function lets you specify how to connect the ports of each N-port device to the ports of the subsequent N-port device in the cascade. For more information about the function, see the `cascadesparams` reference page.

## **Improvements to the plotyy Method**

The `plotyy` method now uses a more intuitive approach when determining how to plot the specified parameters if you do not specify the plot format. For more information about the function, see the `plotyy` reference page.



# R2008a

---

**Version: 2.3**

**New Features**

## Calculation and Plotting Metrics Added

You can now compute and visualize group delay, voltage gain, and stability factor using the `calculate` and `plot` methods.

## Network Parameter Conversion Functions Enhanced

You can now use the `s2sdd`, `s2sdc`, `s2scd`, and `s2scc` functions to perform conversions on network parameters with alternate port arrangements.

## gammams and gammaml Functions Added

Use the new `gammams` and `gammaml` functions to compute source and load reflection coefficients required for simultaneous conjugate match.

## z2gamma Function Added

Use the new `z2gamma` function to convert impedance values to reflection coefficients.

## Demos Added and Updated

A new demo, `Writing a Touchstone File`, shows how to write `rfckt` object data to an industry-standard Touchstone data file.

`Modeling a High-Speed Backplane (4-Port S-Parameters to a Rational Function Model)` now uses the new Communications Toolbox™ eye diagram scope, `commscope.eyediagram`, to plot the eye diagram.

## Command-Line Help Updated

The `help` function returns additional information for objects and packages. The function now includes descriptions of all properties and links to all relevant methods.

# R2007b

---

**Version: 2.2**

**New Features**

## **snp2smp Function Added**

Use the new `snp2smp` function to convert N-port S-parameter data and termination impedances to M-port S-parameters.

## **circle Method Added**

Use the new `circle` method to place circles on a Smith® Chart to depict stability regions and display constant gain, noise figure, reflection, and immittance circles.

## **powergain Function Added**

Use the new `powergain` function to compute various power gains of a 2-port network.

## **Smith Chart Enhanced**

The `smith` method now lets you plot the network parameters of devices with more than two ports on a Smith Chart.

## **Demos Added and Updated**

Modeling a High-Speed Backplane (Measured 16-Port S-parameters to 4-Port S-Parameters) is the new first part of a four-part demo on “Modeling a High-Speed Backplane.” The new demo shows how to extract 4-port S-parameter data from 16-port S-parameter data. The original three parts of the demo are now parts 2, 3, and 4.

The following demos replace the “Designing Impedance Matching Networks” and “Placing Circles on a Smith Chart” demos, respectively, and show how to use the new `circle` method:

- **Designing Matching Networks (Part1: Networks with LNA and Lumped Elements)** uses the available gain design technique to design a low-noise amplifier for a wireless communication system.
- **Designing Matching Networks (Part2: Single Stub Transmission Lines)** shows how to design input and output matching networks for an amplifier.

# R2007a

---

**Version: 2.1**

**New Features**

## Agilent P2D and S2D System-Level Verification Model Support Added

The `rfckt.amplifier` and `rfckt.mixer` objects now let you import system-level verification models of amplifiers and mixers, respectively, using data from Agilent® P2D and S2D files.

Use P2D files to specify the following data for multiple operating conditions, such as temperature and bias values:

- Small-signal network parameters
- Power-dependent network parameters
- Noise data
- Intermodulation tables

Use S2D files to specify the following data for multiple operating conditions:

- Small-signal network parameters
- Gain compression (1 dB)
- Third-order intercept point (IP3)
- Power-dependent  $S_{21}$  parameters
- Noise data
- Intermodulation tables

Use the following methods to work with operating condition data after you import a P2D or S2D file into an RF object:

- `setop` — Use this method to set operating condition values or to list all available values.
- `getop` — Use this method to display the selected operating condition values.

## Mixer Spur Analysis Added

You can import an intermodulation table into an `rfckt.mixer` object. The object's `plot` method has a new option for plotting mixer spur data.

## timeresp Method Added

Use the new `timeresp` method of the `rfmodel.rational` object to compute the time response of an `rfmodel` object to a specified input signal. Use this method rather than computing impulse response with the `impulse` method and then convolving that response with the input signal because the `timeresp` method generally gives a more accurate output signal for a given input signal.

## Plotting Methods Added

Four new plotting methods provide additional plotting options:

- Use the `plotty` method of the `rfckt` class to create a plot that contains RF circuit object data on both the left and right Y-axes.
- Use the `loglog` method of the `rfckt` class to plot RF circuit object data on a log-log scale.
- Use the `semilogx` method of the `rfckt` class to plot RF circuit object data using a logarithmic scale for the X-axis.

- 
- Use the `semilogy` method of the `rfckt` class to plot RF circuit object data using a logarithmic scale for the Y-axis.

## **gamma2z Function Added**

Use the new `gamma2z` function to compute input impedance from a reflection coefficient.

## **Tab Completion Added**

Tab completion is now available in the MATLAB command window for all functions and methods. For more information on tab completion, see the MATLAB documentation.

## **Data Tips Added**

Data tips are now available for any RF plot. For more information on data tips, see [Data Cursor — Displaying Data Values Interactively](#).

## **Demos Added and Updated**

`Visualizing Mixer Spurs` shows how to use the toolbox to perform mixer spur analysis using data from an intermodulation table and then plot the output power spectrum of the desired signal and the undesired spurs.

`Modeling High-Speed Backplane (Measured 4-Port S-Parameters to Rational Function Model)` now uses the `timeresp` method to compute the time-domain response of a system characterized by measured data.

`Modeling High-Speed Backplane (Rational Function Model to Simulink Model)` now includes code that you can use to generate a Simulink model for any `rfmodel.rational` object.





# R2006b

---

**Version: 2.0**

**New Features**

## **S-Parameter Conversion Function Added**

Use the `s2tf` function to convert 2-port scattering parameters into a transfer function that represents the normalized voltage gain of a 2-port network.

## **rfmodel Class Added**

Use objects from the `rfmodel` class to represent components and networks with mathematical equations. The `rfmodel.rational` object stores a rational function model of a component or network.

## **rationalfit Function Added**

Use the `rationalfit` function to fit a rational function to passive data that represents an RF component or network and then store the result in an `rfmodel.rational` object. This type of model is useful to signal integrity engineers, whose goal is to reliably connect high-speed semiconductor devices with, for example, multi-Gbit/s serial data streams across backplanes and printed circuit boards.

## **freqresp and impulse Functions Added**

Use the `freqresp` method of the `rfmodel` class to compute the frequency response of an `rfmodel` object.

Use the `impulse` method of the `rfmodel` class to compute the impulse response of an `rfmodel` object.

## **Support for Exporting Verilog-A Models Added**

Use the `writeva` method of the `rfmodel` class to export a description of an RF component or network for use in a time-domain circuit simulator.

## **Demos Added**

“Modeling a High-Speed Backplane (Part 1: Measured 4-Port S-Parameters to a Rational Function Model)” shows how to use the toolbox to model a differential high-speed backplane using rational functions.

“Modeling a High-Speed Backplane (Part 2: Rational Function Model to a Verilog-A Module)” shows how to use toolbox functions to generate a Verilog-A module that models the high-level behavior of a high-speed backplane.

Modeling a Differential High-Speed Backplane in Simulink shows how to use Simulink to simulate a differential high-speed backplane.

# R2006a

---

**Version: 1.3**

**New Features**

## **S-Parameter Conversion Functions Added**

Use the `s2scc` function to convert 4-port, single-ended S-parameters to 2-port, common mode S-parameters.

Use the `s2scd` function to convert 4-port, single-ended S-parameters to 2-port, cross mode S-parameters.

Use the `s2sdc` function to convert 4-port, single-ended S-parameters to 2-port, cross mode S-parameters.

Use the `s2sdd` function to convert 4-port, single-ended S-parameters to 2-port, differential mode S-parameters.

# R14SP3

---

**Version: 1.2**

**New Features**

## **extract Function Added**

Use the `extract` function to extract specified network parameters from a circuit or data object and return the result in an array.

## **Circuit Object Added**

Use `rfckt.rlcgline` to construct an RLCG transmission line object.

## **Transmission Line Object Improved**

The new `Freq` property of the circuit object, `rfckt.txline`, is a vector of positive frequencies at which the parameter values are known.

The `Loss`, `PV`, and `Z0` properties of the circuit object, `rfckt.txline`, can now be vectors of line loss, phase velocity, and characteristic impedance values that correspond to the frequencies specified in the `Freq` property.

The new `IntpType` property of the circuit object, `rfckt.txline`, is the interpolation method used to calculate the parameter values between the known frequencies.

## **Touchstone Data File Support Improved**

You can now read data from Touchstone data files that contain comments and spaces between sections of data.

## **Demos Improved**

The demos have new documentation and can be accessed using an improved interface.

## **Command Window Help for Functions That Act on Circuit Objects Added**

You can access help for functions that act on circuit objects by using the syntax `help functionname` at the MATLAB command prompt.

# R14SP2

---

**Version: 1.1**

**New Features**

## Plot Figures Integrated into the RF Tool GUI

In earlier versions, a plot figure would appear in a separate window after clicking the **Plot** button. In this version, plot figures are integrated into the GUI itself.

## Five Objects Added

These objects can be used to store rfd data such as network parameters, noise figure, power, IP3, and spot noise.

## Three Circuit Objects Added

Use `rfckt.delay` to model delay lines, `rfckt.hybridg` to model hybrid G connected networks, and `rfckt.passive` to model RF passive networks.

## Methods Added

The new `write` method allows saving of RF network data into files for all `rfckt` objects.

The new methods, `read` and `restore`, read and restore data for `rfckt.datafile`, `rfckt.amplifier`, and `rfckt.mixer`.

## Method Enhanced

The `analyze` method now takes three additional optional inputs for the load, source, and reference impedances.

## Functions Added

The functions `stabilitymu` and `stabilityk` calculate the stability factors  $\mu$  and  $k$ .

The functions `h2g` and `g2h` convert between hybrid G and hybrid H parameters.

## General Enhancements

It is now possible to create the objects `rfckt.amplifier` and `rfckt.mixer` from a MATLAB variable.

The frequency-dependent NF and IP3 data types were added to the AMP format.